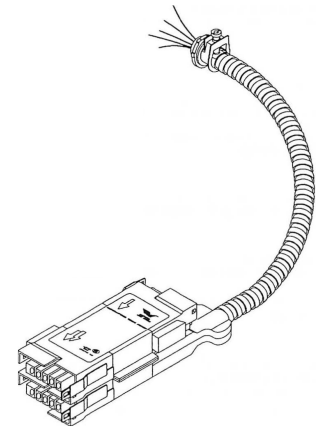


Catalog Number
Notes
Type



Made in the USA

APPLICATION

The **Switch Module** is designed to provide locally-controlled switching of a room or other indoor area as desired. An **Extender Cable**, or a **Distribution Cable** plugged into the **Switch Module's** "power-in" port supplies the **Switch Module** with unswitched power. To complete the installation, simply plug the "switched out" port into the first **Lighting Cable** being controlled and make the proper terminations at the switch or switches.

COMPONENT INFORMATION

CAT. #S	DESCRIPTION	COLORS
120 Volts		
1SA*	single circuit, 2-wire w/grd	black feed, pink return, & green
1SB*	two circuit, 3-wire w/grd	black feed, pink return, lt. blue return & green
1SC*	three circuit, 4-wire w/grd	black feed, red feed, pink return, lt. blue return & green
277 Volts		
2SA*	single circuit, 2-wire w/grd	brown feed, purple return & green
2SB*	two circuit, 3-wire w/grd	brown feed, purple return, tan return & green
2SC*	three circuit, 4-wire w/grd	brown & yellow feed, purple & tan return & green

*Denotes cable length in feet.

FEATURES

- Rated for use on 20 ampere branch circuits.
- Factory pre-wired with "power-in", "power-out", and "switched-out" ports.
- Provides switched and unswitched power at each location.
- Manufactured from Type MC Cable with full size grounding conductor and six inch leads, minimum, for termination at the switch location.
- Connector housing is zinc-plated .060 inches cold-rolled steel.
- Pin and socket connector design.
- To eliminate inter-voltage connection, each connector is keyed and color coded to meet specific voltage requirements.
- IBEW Assembled, UL listed and labeled.
- Meets requirements of NEC® Article 604.
- Acceptable for use in environmental air-handling spaces other than ducts or plenums per NEC Article 300-22(c).

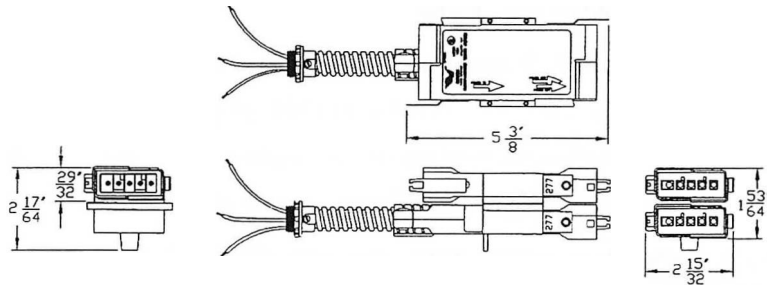
ORDERING INFORMATION

Example: 2SA15

<u>Voltage</u>	<u>Function</u>	<u>No. of Wires</u>	<u>Cable Length in Feet</u>
1 - 120V 2 - 277V	S - Switch Module	A - 1 circuit, 2-wire w/ ground B - 2 circuit, 3-wire w/ ground C - 3 circuit, 4-wire w/ ground	15 - 15" 25 - 25' 20 - 20" 30 - 30'

WEIGHT	5.0 pounds (15' Length)
LENGTH	Unrestricted by NEC
MINIMUM COIL DIAMETER	9 Inches (Inner Diameter)
CABLE	
Type	MC
Conductor	Copper, solid, 90°C, THHN
Conductor size	12AWG
Ground Conductor	12 AWG, copper, solid
CONTACT	0.016" tinned copper alloy
CONTACT HOUSING	
Material	Polycarbonate, UL 94V-2
Keying	Complies with NEC 604-6(B)
CONNECTOR HOUSING & STRAIN RELIEF	
Material	0.060" Cold-rolled steel
Plating	Zinc bright dip
Attaching hardware	Rivet, steel, zinc plated
LATCH	#3 zinc alloy, die cast
LATCH STRIKE	
Material	0.028 AISI 1075 cold-rolled spring steel
Plating	Black oxide
MECHANICAL CONNECTOR	½" MC Connector, plated

KEY DIMENSIONS



SYSTEM VIEW

